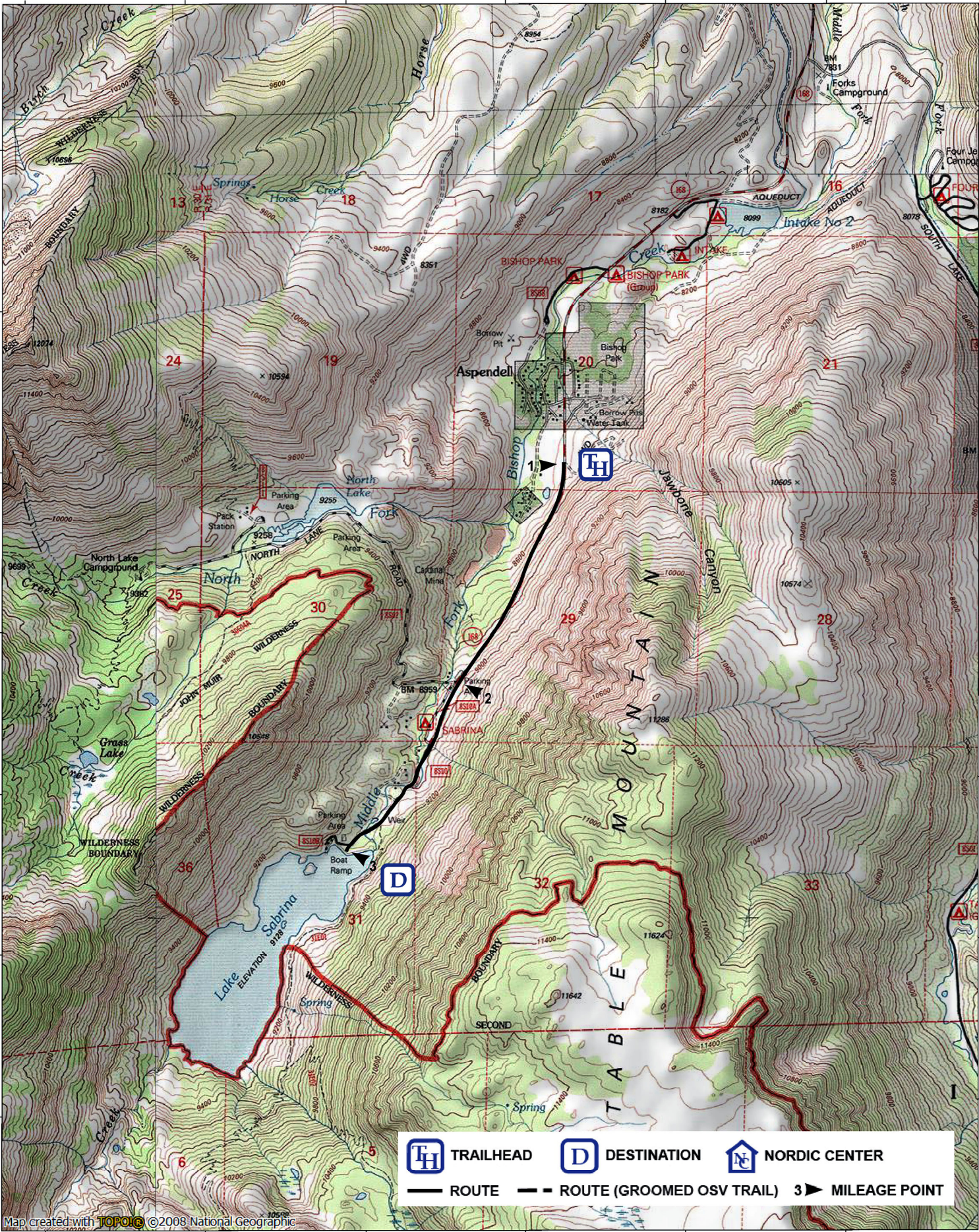





355000m.E. 356000m.E. 357000m.E. 358000m.E. 359000m.E. WGS84 Zone 11S 360000m.E.

41.24000m.N.  
41.23000m.N.  
41.22000m.N.  
41.21000m.N.  
41.20000m.N.  
41.19000m.N.  
41.18000m.N.

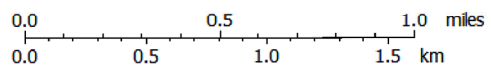
41.24000m.N.  
41.23000m.N.  
41.22000m.N.  
41.21000m.N.  
41.20000m.N.  
41.19000m.N.  
41.18000m.N.



 TRAILHEAD   
  DESTINATION   
  NORDIC CENTER  
 — ROUTE    - - ROUTE (GROOMED OSV TRAIL)    3 ► MILEAGE POINT

Map created with **TOPO16** ©2008 National Geographic

# Lake Sabrina



TN MN  
12½°  
10/07/21